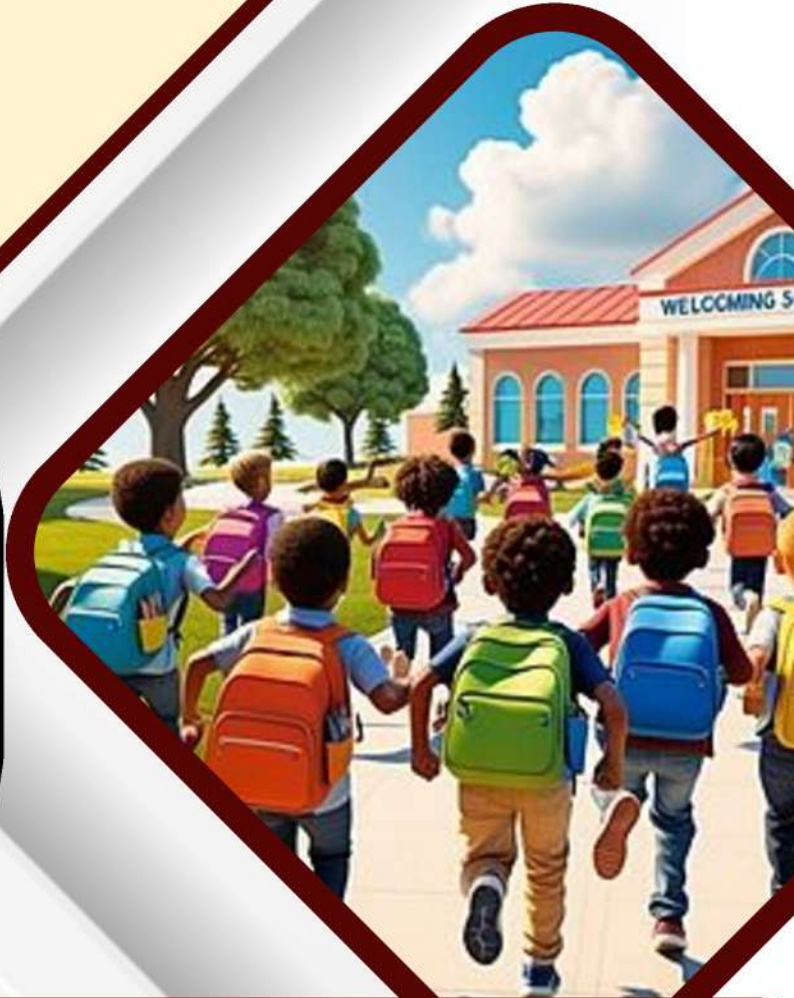


**KAWISH E JAMEEL
FOUNDATION**



Annau Report

2025-26



| 9028282166 |



| kawishejameelfoundation@gmail.com |

OFFICE: STAR COMPUTERS, MOHAMMADI CHOWK, SILK MILLS COLONY, AURANGABAD - 431005

KAWISH E JAMEEL FOUNDATION



At the heart of KAWISH E JAMEEL FOUNDATION, Chhatrapati Sambhajnagar lies a simple conviction: true development begins when the most vulnerable among us are seen, heard, and equipped to rise. From the earliest days, the founders were moved by the gap between urgent health needs and limited access, and by the untapped potential of individuals who lacked the means to build a better future. This organization was born out of that concern—an earnest desire to bring preventive healthcare, timely screenings, and livelihood training directly to communities that often remain on the margins.

Our work is guided by the belief that compassion must be matched with action, and that sustainable change is possible only through partnership—with beneficiaries, local leaders, medical professionals, volunteers, and institutional supporters. Every medical camp, every cancer screening drive, and every skill development session is not merely an activity; it is a step toward restoring dignity, hope, and self-reliance. We are keenly aware that challenges will persist, yet we are equally certain that consistent, transparent, and community-centered efforts can create lasting impact.

As founders, we remain committed to learning, adapting, and expanding our reach, while holding steadfast to principles of integrity, accountability, and respect for every individual. It is our earnest hope that this Sanstha becomes a trusted platform where health and opportunity converge—helping people not only survive but thrive, and inspiring others to join in building a more equitable, compassionate society.

Introduction

KAWISH E JAMEEL FOUNDATION, CHHATRAPATI SAMBHAJINAGAR IS A COMMITTED, COMMUNITY-DRIVEN NON-GOVERNMENTAL ORGANIZATION DEDICATED TO ADVANCING INCLUSIVE AND SUSTAINABLE DEVELOPMENT AMONG UNDERSERVED AND MARGINALIZED POPULATIONS. ESTABLISHED WITH A VISION TO PROMOTE SOCIAL WELFARE THROUGH INTEGRATED AND NEED-BASED INTERVENTIONS, THE ORGANIZATION FUNCTIONS AS A CATALYST FOR POSITIVE TRANSFORMATION IN BOTH RURAL AND URBAN COMMUNITIES.

The Sanstha actively undertakes preventive and curative healthcare initiatives, including the organization of general medical camps and specialized cancer screening programs aimed at early detection, timely referral, and health awareness. Through these initiatives, the organization strives to reduce health disparities and improve overall community well-being.

In addition to healthcare outreach, the organization places strong emphasis on livelihood promotion and skill development. By conducting vocational training and capacity-building programs, it enables youth, women, and economically disadvantaged individuals to enhance their employability, pursue self-employment opportunities, and achieve financial independence.

Guided by the principles of transparency, accountability, and community participation, KAWISH E JAMEEL FOUNDATION works in collaboration with local stakeholders, healthcare professionals, and institutional partners to ensure the effective implementation of its programs. Through its sustained efforts, the organization remains committed to fostering dignity, self-reliance, and equitable opportunities for holistic social development.

Vision

To establish KAWISH E JAMEEL FOUNDATION, Chhatrapati Sambhajnagar as a leading, community-centered institution committed to inclusive and sustainable development by promoting accessible healthcare through medical and cancer screening camps, empowering individuals through livelihood and skill development initiatives, and fostering social well-being with compassion, integrity, and collective responsibility, thereby enabling underserved communities to achieve improved quality of life, self-reliance, and equitable opportunities for holistic growth.



Mission

The mission of KAWISH E JAMEEL FOUNDATION, Chhatrapati Sambhajnagar is to promote equitable access to preventive and primary healthcare services through the systematic organization of medical camps and specialized cancer screening initiatives; to strengthen community awareness regarding early diagnosis and healthy living practices; and to enhance socio-economic stability by implementing structured livelihood and skill development programs for youth, women, and economically disadvantaged groups.

The organization is committed to executing all its activities with transparency, accountability, and community participation, thereby fostering sustainable development, self-reliance, and holistic well-being across rural and urban communities.



goals

To improve access to affordable and preventive healthcare services by regularly organizing medical check-up camps and specialized cancer screening programs, particularly for economically weaker and rural populations.

To promote early diagnosis, health awareness, and preventive practices through structured outreach campaigns and community education initiatives.

To enhance livelihood opportunities by conducting skill development and vocational training programs tailored to local employment needs and self-employment potential.

To empower youth, women, and disadvantaged groups through capacity-building initiatives that foster financial independence and social inclusion.

To collaborate with government bodies, CSR partners, healthcare institutions, and community stakeholders to ensure sustainable implementation of development programs.

To uphold principles of transparency, accountability, and ethical governance in all organizational activities and resource utilization.

To contribute toward holistic community development by integrating health, education, and economic empowerment initiatives in a coordinated and impactful manner.

Background and Establishment

KAWISH E JAMEEL FOUNDATION, Chhatrapati Sambhajnagar, was established with the objective of addressing critical social and developmental challenges faced by marginalized and economically weaker sections of society. The organization emerged from a collective commitment of socially conscious individuals who recognized the urgent need for accessible healthcare services, preventive medical awareness, and sustainable livelihood opportunities within the region.

The foundation of the Sanstha is rooted in the belief that community development must be holistic, inclusive, and participatory. Observing the growing incidence of preventable diseases, delayed medical diagnosis, and limited employment opportunities among vulnerable populations, the founders initiated structured interventions such as medical check-up camps, cancer screening programs, and skill-based livelihood training initiatives.

Since its inception, the organization has steadily expanded its outreach by collaborating with medical professionals, volunteers, and local stakeholders to ensure effective service delivery. The Sanstha was formally constituted and registered in accordance with applicable legal provisions, with a commitment to transparency, accountability, and ethical governance.

Through its sustained efforts, KAWISH E JAMEEL FOUNDATION continues to function as a dedicated platform for social welfare, striving to bridge gaps in healthcare access and economic empowerment while fostering dignity, self-reliance, and community well-being.



KAWISH E JAMEEL FOUNDATION



MAHILA GROUH UDYOG PROMOTE CAMP

Livelihood Promotion and Institutional Capacity Building

The "Integrated Women's Collective Enterprise and Capacity Enhancement Programme" represents a flagship initiative conceptualized and implemented by KAWISH E JAMEEL FOUNDATION. This programme is designed as a structured intervention to address the systemic economic disparities faced by women in semi-urban and rural sectors. It operates on the fundamental premise that economic independence is the cornerstone of social empowerment.

At its core, the initiative is a comprehensive NGO activity aimed at strengthening women-led group enterprises. It moves beyond simple vocational training to encompass a holistic ecosystem of support that nurtures nascent businesses into sustainable entities. The organization recognizes that ad-hoc training is insufficient; therefore, a long-term, multi-dimensional approach has been adopted.

The primary objective of the programme is to promote self-reliance, entrepreneurship, and economic empowerment among women. By shifting the narrative from "beneficiaries" to "entrepreneurs," KAWISH E JAMEEL FOUNDATION seeks to instill a sense of ownership and agency in every participant. This psychological shift is as critical as the financial outcomes the programme targets.

The initiative focuses primarily on women organized into Self-Help Groups (SHGs) and informal community collectives. Leveraging the social capital already present in these groups allows for a more cohesive entry point for business interventions. The collective model mitigates individual risk and fosters a support system essential for first-generation entrepreneurs.

This programme reflects the deep-seated organizational commitment of KAWISH E JAMEEL FOUNDATION toward inclusive development. It aligns with the organization's broader vision of creating a society where women are active contributors to the economic mainstream rather than passive recipients of aid.

CAPACITY BUILDING AND SKILL DEVELOPMENT

Through systematic training and facilitation, entrepreneurial skills are developed among participants to prepare them for the rigors of market competition. These training sessions are not theoretical but are grounded in the practical realities of the local economy. The curriculum is iterative, evolving based on the immediate feedback and learning curves of the participants.

Skill enhancement workshops are conducted for capacity building, focusing on both hard technical skills and soft managerial skills. The organization believes that technical proficiency must be matched with the ability to manage time, resources, and interpersonal dynamics within a group setting.

Technical guidance regarding small-scale production activities is provided by subject matter experts. Whether the enterprise focuses on agri-processing, textiles, or handicrafts, the programme ensures that the production techniques adhere to modern standards of efficiency and quality.

Women are encouraged to transform traditional skills into income-generating ventures. Many participants possess indigenous knowledge and artisanal skills that have remained dormant or undervalued; this programme seeks to monetize these assets by refining them for contemporary markets.

Practical demonstrations are included to ensure experiential learning, bridging the gap between classroom instruction and real-world application. By seeing processes in action, participants gain the confidence to replicate them in their own production units, reducing the fear of failure.

Training materials are prepared in accessible and locally understandable language to ensure that literacy barriers do not impede learning. KAWISH E JAMEEL FOUNDATION invests significant resources in localizing content so that complex business concepts are demystified.

FINANCIAL LITERACY AND RESOURCE MANAGEMENT

Financial literacy is introduced as a foundational pillar to ensure the sustainable management of resources. Understanding the flow of money—revenue, profit, and investment—is critical for the longevity of any enterprise, and this programme prioritizes financial education from day one.

The importance of savings, credit discipline, and transparent accounting practices is emphasized throughout the training modules. Participants are taught that a business cannot survive without rigorous financial hygiene, and the separation of household finances from business finances is strictly enforced.

Record-keeping and documentation practices are standardized across all participating groups. This standardization not only aids in internal management but also prepares these groups for future auditing and formal financial interactions with banks.

Linkages with financial institutions are facilitated wherever feasible to provide the necessary capital injection for scaling operations. The organization acts as a bridge, helping groups navigate the often intimidating paperwork and procedural requirements of formal banking sectors.

Awareness regarding group-based micro-enterprise models is disseminated through structured sessions. These sessions explore how pooling resources can lead to economies of scale, allowing smaller groups to purchase raw materials in bulk and negotiate better prices.

Collective procurement and bulk purchasing strategies are explained as vital mechanisms for reducing operational costs. By acting as a single economic unit, the women can bypass middlemen and source materials directly from suppliers, thereby increasing their profit margins.

MARKET STRATEGY AND ENTERPRISE DEVELOPMENT

Market-oriented production planning is explained to enhance profitability and ensure that supply meets actual demand. The programme discourages production based solely on habit; instead, it advocates for data-driven decisions based on current market trends and consumer preferences.

Local resource-based industries are identified and promoted to minimize dependency on external supply chains. Utilizing locally available raw materials not only reduces costs but also fosters a sense of pride in local produce and aligns with sustainable economic practices.

Training modules on packaging, branding, and marketing are delivered to elevate the perceived value of the products. KAWISH E JAMEEL FOUNDATION emphasizes that in a competitive market, visual appeal and professional presentation are as important as product quality.

Quality control standards are introduced to ensure product consistency, which is essential for building customer loyalty. The programme establishes strict protocols to ensure that every batch of products meets a specific benchmark, thereby building a reputation for reliability.

Partnerships with local stakeholders are explored to expand market access and create varied distribution channels. By collaborating with local shops, fairs, and distributors, the programme ensures that the products have immediate outlets while larger markets are being accessed.

E-commerce opportunities are explained in simplified formats to introduce the groups to the digital marketplace. Understanding that the future of retail is online, the programme demystifies platforms and digital payment gateways for rural entrepreneurs.

Digital literacy components are introduced to modernize operations, covering everything from using smartphones for marketing to digital bookkeeping. This digital inclusion ensures that women entrepreneurs are not left behind in an increasingly digitized economy.

INSTITUTIONAL STRENGTHENING AND GOVERNANCE

The concept of cooperative functioning within group enterprises is promoted to ensure democratic decision-making. The programme stresses that a group enterprise is not a hierarchy but a partnership where every member has a voice and a stake in the outcome.

Leadership development sessions are conducted for group representatives to cultivate the next generation of community leaders. These sessions focus on conflict resolution, strategic planning, and public speaking, empowering women to represent their interests effectively.

Women's participation in decision-making processes is strengthened, not just within their enterprises but within their households and communities. The economic clout gained through the programme invariably translates into greater social influence and autonomy.

Legal awareness regarding business registration and compliance is imparted to transition informal groups into formal legal entities. Understanding the regulatory landscape protects the groups from legal vulnerabilities and opens doors to government contracts and subsidies.

Government schemes supporting women entrepreneurs are explained in detail to ensure participants can avail themselves of public benefits. KAWISH E JAMEEL FOUNDATION acts as a knowledge repository, guiding women through the maze of available state and central welfare programs.

Risk management and contingency planning are discussed to prepare groups for unforeseen economic downturns. Whether it is a supply chain disruption or a natural calamity, having a plan in place ensures the resilience of the enterprise.

KAWISH E JAMEEL FOUNDATION



SOCIAL IMPACT AND COMMUNITY INTEGRATION

Community participation is encouraged to ensure social acceptance of women's entrepreneurial activities. The organization actively engages with community elders and family members to mitigate resistance and build a supportive environment for the women. Special emphasis is placed on marginalized and economically weaker women to ensure the programme reaches those who need it most. Equity is a guiding principle, and affirmative action is taken to include women from historically disadvantaged backgrounds.

Social entrepreneurship models are introduced as sustainable alternatives that solve community problems while generating revenue. The programme encourages businesses that address local needs—such as sanitation, nutrition, or education—thereby creating social value alongside economic value. Social dignity and confidence among women participants are enhanced through their identity as business owners. The transformation from "housewife" to "entrepreneur" brings a profound shift in self-perception and commands respect within the social structure.

Confidence-building exercises are incorporated into the programme framework to tackle psychological barriers. Many participants battle imposter syndrome or deep-seated insecurity; these exercises are designed to validate their potential and capability. Networking platforms are created for peer learning and collaboration, allowing groups to share best practices and common challenges. These horizontal linkages create a fraternity of women entrepreneurs who act as a support system for one another.

Exposure visits to successful women-led enterprises are organized to provide tangible proof of what is possible. Seeing women from similar backgrounds succeeding in business serves as powerful inspiration and validates the training they are receiving. Success stories are documented to inspire wider participation and serve as case studies for future cohorts. KAWISH E JAMEEL FOUNDATION systematically records these narratives to build an evidence base for the programme's efficacy.

Recognition certificates are awarded to participating groups to formalize their achievement and provide a sense of accomplishment. These certificates often serve as the first formal recognition of skill many of these women have ever received. Community exhibitions are organized to showcase products, serving a dual purpose of marketing and social validation. These events allow the community to see the tangible output of the women's hard work, fostering pride and local patronage.

SUSTAINABILITY AND FUTURE OUTLOOK

Follow-up monitoring is carried out to assess enterprise progress and identify bottlenecks early. The organization does not believe in a "train and leave" model; continuous observation ensures that interventions can be tweaked in real-time. Mentorship support is extended beyond the training period to guide the enterprises through their initial growth phases. Access to mentors allows entrepreneurs to troubleshoot specific problems that were not covered in general training.

Feedback mechanisms are institutionalized for continuous improvement of the programme design. The participants are viewed as co-creators of the curriculum, and their input shapes the evolution of future training modules. Environmental sustainability practices are integrated wherever possible to ensure eco-friendly production. The programme advocates for waste minimization, energy efficiency, and the use of non-toxic materials, aligning local business with global environmental goals.

Income diversification methods are encouraged within group enterprises to prevent over-reliance on a single product line. A diversified portfolio protects the group from market fluctuations affecting specific commodities. Household income enhancement is targeted as a measurable outcome, with strict indicators to track financial progress. The ultimate goal is to see a tangible rise in the standard of living, education levels of children, and asset creation within the families of participants.

The programme contributes toward rural and semi-urban economic development by circulating money within the local economy. When women earn, they spend locally, creating a multiplier effect that benefits the entire community. Long-term sustainability of group enterprises is prioritized over short-term gains. The focus is on building robust business models that can survive without external aid in the long run, ensuring the permanence of the impact.

The initiative aligns with national objectives of women empowerment and poverty alleviation. By contributing to the national development goals, KAWISH E JAMEEL FOUNDATION positions itself as a partner in nation-building.

AIDS AWARENESS CAMP

The Integrated Community Health and HIV/AIDS Prevention Initiative

Public Health, Disease Prevention, and Social Welfare

"The Integrated Community Health and HIV/AIDS Prevention Initiative" acts as a pivotal public health intervention spearheaded by KAWISH E JAMEEL FOUNDATION. This programme is not merely an awareness drive but a structured, long-term commitment to safeguarding community health through education and preventive action. It addresses the critical need for accurate health information in underserved areas.

The programme is implemented as a core NGO activity under the organization's broader health and social welfare mandate. It reflects the organization's understanding that public health is foundational to community development and that disease prevention is a collective social responsibility. The primary design of the initiative is focused on promoting comprehensive awareness regarding Human Immunodeficiency Virus (HIV) and Acquired Immunodeficiency Syndrome (AIDS). KAWISH E JAMEEL FOUNDATION recognizes that ignorance and misinformation are often as dangerous as the virus itself, necessitating a knowledge-based intervention.

Scientific and evidence-based information is disseminated to prevent misconceptions that often prevail in rural and semi-urban communities. The programme ensures that all shared data aligns with national health guidelines and World Health Organization (WHO) protocols to maintain medical accuracy. Community sensitization sessions are conducted as a strategic tool to reduce stigma and discrimination associated with HIV/AIDS. The organization works tirelessly to shift the narrative from fear and judgment to empathy and support, fostering an environment where health issues can be discussed openly.

PREVENTIVE STRATEGIES AND HEALTH EDUCATION

The modes of HIV transmission are explained in a clear, responsible, and culturally appropriate manner. Facilitators are trained to discuss sensitive topics with dignity, ensuring that the community understands exactly how the virus is spread—and, importantly, how it is not spread.

Preventive strategies are emphasized as the primary line of defense against the epidemic. KAWISH E JAMEEL FOUNDATION advocates for behavioral change, emphasizing that prevention is accessible to everyone through informed choices and responsible conduct. The importance of safe health practices is communicated effectively across all age groups. This includes education on safe sexual practices, the dangers of needle sharing, and the necessity of screening blood products, thereby covering all potential vectors of transmission.

Holistic health education is promoted as an integral part of community development. The programme positions HIV prevention within the larger context of general hygiene, reproductive health, and overall well-being, avoiding the isolation of the disease.

Myths and misinformation related to HIV/AIDS are systematically addressed and dismantled. Through interactive sessions, the organization tackles common fallacies—such as transmission through touch or sharing food—that fuel social ostracization.

MEDICAL SUPPORT AND COUNSELING SERVICES

Information regarding voluntary testing and counseling services is provided to encourage early detection. The programme demystifies the testing process, portraying it as a routine health check-up rather than a source of fear or shame. Confidentiality and ethical considerations are highlighted during all awareness sessions. KAWISH E JAMEEL FOUNDATION assures participants that their privacy is paramount, which is essential for building trust and encouraging people to seek help.

Confidential HIV testing centers are identified and promoted within the operational area. The organization creates resource maps to guide community members to the nearest government or accredited private facilities where they can access safe testing. Counseling support referrals are facilitated wherever necessary, bridging the gap between awareness and psychological support. Recognizing the mental health toll of a diagnosis, the programme links individuals with professional counselors who can provide guidance and emotional stability.

Information about antiretroviral therapy (ART) services is shared to provide hope and a clear care pathway. Participants are educated that HIV is a manageable chronic condition, and with adherence to ART, individuals can lead long, productive lives. Participants are educated about the importance of early diagnosis in managing the disease effectively. The programme stresses that knowing one's status is the first step toward power and health, rather than a sentence of doom.

Awareness regarding mother-to-child transmission (MTCT) prevention is included as a critical component. Special sessions for expectant mothers explain how medical interventions can protect the unborn child, aiming for an HIV-free generation.

TARGET GROUPS AND OUTREACH METHODOLOGY

Special outreach efforts are directed toward youth and vulnerable populations who are statistically at higher risk. KAWISH E JAMEEL FOUNDATION employs peer-led interventions to reach these demographics effectively. School and college-based educational workshops are organized to catch the younger generation before they engage in risky behaviors. These workshops are tailored to be age-appropriate and focus on life skills, peer pressure, and responsible decision-making.

Youth leadership involvement is encouraged to expand the programme's outreach. By training young leaders, the organization creates ambassadors who can carry the message of prevention into their peer groups and social circles. Community meetings are arranged in rural and semi-urban areas to ensure geographical inclusivity. These meetings often take place in village squares or community halls, making the information accessible to those who cannot travel to urban centers.

Inclusive participation from men and women is ensured to create a balanced dialogue. The programme recognizes that HIV prevention is not solely a "women's issue" or a "men's issue" but a societal one requiring partnership between genders. Gender-sensitive approaches are adopted throughout the programme to address specific vulnerabilities. The organization acknowledges power dynamics that may affect a woman's ability to negotiate safety and addresses these through empowerment modules.

Educational presentations are prepared in locally understandable languages to break down linguistic barriers. Whether through dialect-specific street plays or vernacular pamphlets, the message is delivered in the voice of the people.

STAKEHOLDER COLLABORATION AND PARTNERSHIPS

Collaboration with local healthcare providers is facilitated to create a seamless referral network. KAWISH E JAMEEL FOUNDATION works hand-in-hand with doctors, nurses, and ASHA workers to ensure medical accuracy and service availability.

Medical professionals are invited to deliver expert lectures, lending scientific authority to the awareness campaigns. Their presence helps in answering complex medical queries that lay volunteers might not be equipped to handle.

Partnerships with local governing bodies and Gram Panchayats are strengthened to institutionalize the programme. Gaining the support of local political leadership ensures that health initiatives receive the necessary administrative backing.

Health camps are organized in collaboration with medical institutions to provide general health screenings alongside HIV awareness. This integrated approach increases attendance and reduces the stigma associated with attending an "HIV-only" event.

Health resource directories are compiled and shared with beneficiaries. These directories serve as a tangible takeaway, providing contact details for hospitals, blood banks, counselors, and support groups.

INFORMATION, EDUCATION, AND COMMUNICATION (IEC)

Informational pamphlets and IEC (Information, Education and Communication) materials are distributed widely. These materials act as silent educators, allowing individuals to read and absorb information in the privacy of their homes.

Digital awareness campaigns are implemented through social media platforms to reach the tech-savvy demographic. KAWISH E JAMEEL FOUNDATION utilizes modern communication tools to disseminate short, impactful messages and videos.

Interactive question-and-answer sessions are conducted to clarify doubts immediately. These open forums allow participants to voice their anxieties and receive factual corrections in real-time.

Public rallies and awareness campaigns are organized on relevant health days to create mass visibility. These large-scale events demonstrate community solidarity and keep the issue on the public agenda.

Observance of World AIDS Day is conducted with structured activities, including candlelight vigils, pledges, and educational marathons. This global observance serves as an annual anchor for reviewing progress and renewing commitments.

Long-term behavioral change communication strategies are adopted rather than short-term sloganizing. The programme focuses on the psychology of habit formation to encourage sustained safe practices.

RIGHTS, DIGNITY, AND SOCIAL ADVOCACY

The rights and dignity of persons living with HIV/AIDS (PLWHA) are reinforced as a non-negotiable human right. The programme advocates against workplace discrimination and social exclusion, championing the legal and moral rights of affected individuals. Anti-discrimination messages are strongly reinforced in every session. KAWISH E JAMEEL FOUNDATION positions discrimination as a barrier to public health, arguing that stigma drives the disease underground.

Community volunteers are trained as peer educators to sustain the momentum of the initiative. These volunteers act as the eyes and ears of the organization, providing continuous support within their neighborhoods. Family counseling awareness is incorporated into discussions to support the domestic ecosystem. The programme helps families understand how to support a positive member without fear of infection, preserving the family unit.

Preventive healthcare is positioned as a collective social responsibility. The narrative is shifted from individual blame to collective care, encouraging the community to look out for one another's well-being. Emphasis is placed on responsible social behavior and informed decision-making. The programme encourages individuals to take ownership of their health and the health of their partners through open communication.

MONITORING, EVALUATION, AND CONCLUSION

Community-level data collection is conducted to assess awareness gaps and tailor interventions. Surveys and feedback forms help the organization understand which myths are prevalent and which demographics are underserved. Monitoring and evaluation mechanisms are integrated into the programme architecture. Regular reviews ensure that the activities are being implemented as planned and resources are being utilized efficiently.

Impact assessments are undertaken to measure outreach effectiveness. KAWISH E JAMEEL FOUNDATION analyzes changes in knowledge levels and testing rates to gauge the tangible success of the initiative. Follow-up engagement with participants is maintained to ensure knowledge retention. The organization revisits communities to reinforce key messages and introduce new information as medical science evolves.

The programme supports national and global public health objectives, including the goal of ending the AIDS epidemic. By aligning with larger frameworks, the initiative contributes to the macro-level fight against the virus. The initiative contributes to safer and informed communities where health is prioritized. An informed community is a resilient community, capable of protecting its members from preventable health crises.

The programme reflects the deep social commitment of KAWISH E JAMEEL FOUNDATION toward public health advancement. It showcases the NGO's dedication to serving the most vital needs of society beyond mere economic assistance.

Through this comprehensive approach, the organization ensures that health education becomes a permanent fixture of community life. The legacy of the programme is a population that is knowledgeable, compassionate, and proactive regarding its health.

KAWISH E JAMEEL FOUNDATION



Republic Day Celebration

26th January

A Morning of Patriotic Fervor

The organization commemorated the 72nd Republic Day of India on 26th January 2021 with an event steeped in profound patriotic fervor. The morning commenced with a palpable sense of national pride as community members, staff, volunteers, and beneficiaries gathered at our central grounds. The air was filled with the spirit of unity and reverence for the nation's constitution, setting a dignified tone for a day dedicated to celebrating our democratic values.

The Solemn Flag Hoisting Ceremony

The centerpiece of the morning's proceedings was the solemn flag hoisting ceremony. We were honored to have the tricolor unfurled by esteemed senior members of our community, whose lifelong contributions have been a source of inspiration for all. As the flag ascended and the flower petals showered down, the collective voice of the attendees, singing the National Anthem in unison, echoed through the grounds, creating a moment of deep emotional resonance and shared identity.

Inspiring Words for a Stronger Nation

Following the anthem, the formal program began with a welcome address from our organization's Director, who highlighted the significance of the Constitution in safeguarding the rights and duties of every citizen. The keynote speeches, delivered by our honored guests, focused on the role of civil society and community-led initiatives in the continuing task of nation-building. The speakers urged the audience, particularly the youth, to actively participate in the democratic process and contribute positively to societal development.

KAWISH E JAMEEL FOUNDATION



Republic Day Celebration

26th January

Cultural Showcase: A Tribute by the Youth

The cultural segment of the celebration was a vibrant showcase of talent and patriotism, led by the youth from our various programs. A choir group presented a moving medley of patriotic songs that chronicled India's journey through the ages. This was followed by a powerful skit depicting key moments from the freedom struggle, reminding everyone of the sacrifices made to secure our nation's sovereignty and liberty.

Children's Participation: The Future of India

A particularly heartwarming segment was the enthusiastic participation of the youngest members of our community. A fancy-dress competition was organized with the theme "Heroes of India," where children came dressed as iconic national figures like Mahatma Gandhi, Rani Lakshmibai, Subhas Chandra Bose, and Dr. B.R. Ambedkar. Their innocent and earnest portrayals not only delighted the audience but also served as a beautiful educational experience about the great leaders who shaped our country.

Fostering Community Bonds

The event was designed not just as a formal observance but as an opportunity for meaningful community interaction. After the main performances, attendees had the chance to mingle and connect with one another over light refreshments. This informal session helped strengthen the bonds between our organization and the community we serve, fostering a sense of shared purpose and collective responsibility.

Republic Day Celebration

26th January 2021

Celebrating Unity in Diversity

A core theme of the celebration was "Unity in Diversity," reflecting the rich, multicultural tapestry of India. The cultural program intentionally included performances representing various regions of the country. A vibrant folk dance from a northern state was followed by a classical song from the south, beautifully illustrating how our diverse traditions come together to form one strong, unified national identity.

The Invaluable Contribution of Volunteers

The success of the Republic Day celebration would not have been possible without the tireless efforts of our dedicated team of volunteers. They worked diligently for days leading up to the event, managing everything from the decoration of the venue with tricolor motifs to the logistical coordination on the day of the celebration. Their selfless service and commitment are a testament to the spirit of community engagement that our organization strives to nurture.

A Lasting Impact on All Attendees

The celebration achieved its primary objective of inspiring a renewed sense of national pride and civic duty among all who attended. The combination of solemn ceremony, inspiring speeches, and vibrant cultural performances left a lasting impression, particularly on the youth and children. The event served as a powerful reminder of our shared heritage and the collective responsibility we hold in upholding the ideals enshrined in our Constitution.

Blood Donation Camp: A Life-Saving Initiative

Responding to a Critical Community Need

In line with our commitment to community health and welfare, the organization successfully hosted a voluntary blood donation camp on 18 Jan 2021. Recognizing the constant and critical need for blood in our local healthcare system, this initiative was conceived to mobilize community members in a collective act of saving lives. The camp provided a vital platform for individuals to make a direct and immediate contribution to the well-being of their fellow citizens.

Strategic Collaboration with the Local Blood Bank

To ensure the highest standards of safety and medical professionalism, the camp was organized in Aurangabad . This partnership was instrumental to the event's success, bringing in a team of experienced phlebotomists, nurses, and support staff. Their expertise ensured that the entire process, from donor registration to post-donation care, was conducted smoothly, safely, and efficiently, giving donors confidence and peace of mind.

Community Mobilization and Awareness Campaign

In the weeks preceding the event, a comprehensive awareness campaign was launched across the community. Using posters, social media, and word-of-mouth outreach, we highlighted the profound impact a single blood donation can have. The campaign aimed not only to recruit donors but also to educate the public about the importance of voluntary blood donation and dispel common myths and fears associated with the process.

Blood Donation Camp: A Life-Saving Initiative

Enthusiastic Participation from All Quarters

The response from the community was truly overwhelming and exceeded our expectations. We were proud to register over 40 donors throughout the day. It was particularly inspiring to witness the strong participation of local youth, who turned out in significant numbers, demonstrating a remarkable sense of social responsibility and a commitment to contributing positively to society. Their energy and enthusiasm were contagious.

Ensuring Donor Safety and Care

The well-being of our donors was the highest priority. The medical team from the blood bank conducted thorough health checks for each potential donor, including measuring blood pressure, hemoglobin levels, and a brief medical history review. This meticulous screening process ensured that it was safe for every individual to donate. Post-donation, participants were provided with refreshments and advised to rest, with staff on hand to monitor their comfort.

A Vital Contribution to Emergency Healthcare

By the end of the day, a significant number of blood units had been collected. This precious, life-saving resource was formally handed over to the government hospital to replenish their blood bank. These units will directly support critical medical needs, including emergency surgeries, trauma care, and treatment for patients with chronic illnesses, making a tangible difference in the lives of many individuals and their families.

Blood Donation Camp: A Life-Saving Initiative

An Atmosphere of Generosity and Purpose

On the day of the camp, our community hall was transformed into a well-organized donation center. A sense of shared purpose and quiet determination filled the air as donors began to arrive. Volunteers welcomed each participant, guiding them through the registration and preliminary health screening stations. The atmosphere was one of profound generosity, with each individual present united by the simple desire to help others.

The Spirit of Selfless Giving

The motivations shared by the donors were both humbling and inspiring. Many were first-time donors who had been moved by our awareness campaign, while others were regular contributors who saw it as their civic duty. Their selfless act of giving, without expecting anything in return, embodies the very spirit of community solidarity that our organization seeks to foster.

The Role of Our Dedicated Volunteers

The seamless execution of the blood donation camp was made possible by the hard work of our team of dedicated volunteers. They managed registrations, assisted the medical team, served refreshments, and created a welcoming and supportive environment for the donors. Their commitment and tireless effort were the backbone of this successful event.

Plantation Drive:

Nurturing a Greener Tomorrow

Fostering Environmental Stewardship

As part of our core mission to promote environmental sustainability and ecological balance, the organization proudly conducted a large-scale plantation drive during the 2021 monsoon season. This initiative was a direct response to the growing need for increased green cover in our local environment and aimed to actively involve the community in the vital work of conservation. The drive was envisioned as a practical step towards mitigating climate change at a grassroots level and beautifying our shared spaces.

Strategic Timing for Maximum Impact

The monsoon season was strategically chosen for this endeavor to ensure the highest survival rate for the newly planted saplings. The abundant rainwater provides essential nourishment, helping the young trees to establish strong root systems and thrive in their new environment. This timing reflects a thoughtful approach to our environmental activities, aiming for long-term impact and the sustainable growth of our green initiatives.

A Commitment to Native Biodiversity

In a conscious effort to support local ecosystems, the drive focused exclusively on planting native tree species. Over 250 saplings, including varieties like Neem, Peepal, and Banyan, were carefully selected for their suitability to the local climate and soil conditions. Planting native species is crucial as they support local wildlife, require less maintenance, and play a significant role in preserving the region's unique biodiversity.

Plantation Drive:

Nurturing a Greener Tomorrow

Mobilizing the Community for Collective Action

The success of the plantation drive was rooted in widespread community participation. Before the event, our team conducted several outreach meetings to sensitize community members, leaders, and youth groups. We emphasized the critical role trees play in providing clean air, conserving water, and maintaining ecological health. This groundwork ensured that the drive was not just an organizational activity but a collective community movement.

Planting Seeds of Change Across the Community

The plantation activities were carried out across various key locations to maximize their visibility and benefit. Saplings were planted in the grounds of local schools, creating greener learning environments for children. Public parks and common village lands were also targeted to enhance community recreational areas. This widespread approach ensured that the benefits of the increased green cover would be shared by all residents.

The Day of the Drive: An Atmosphere of Enthusiasm

On the designated days of the drive, there was a remarkable turnout of volunteers and community members of all ages. Armed with shovels and enthusiasm, they worked side-by-side with our staff. The act of digging the soil and carefully placing each sapling fostered a powerful, hands-on connection with nature and instilled a sense of ownership and responsibility for the newly planted trees.

Plantation Drive:

Nurturing a Greener Tomorrow

Engaging the Next Generation

A special focus was placed on involving students and young children in the plantation drive. By participating directly, they gained practical knowledge about the environment and learned the importance of their role as future custodians of the planet. Educational sessions were held at schools post-plantation, reinforcing the message of conservation and encouraging them to care for the saplings they had planted.

Sensitization on Tree Conservation

Beyond the physical act of planting, the drive served as a significant platform for education and awareness. During and after the event, community members were engaged in discussions about the long-term importance of tree conservation. We shared information on simple ways to protect the existing tree cover and nurture the new saplings, ensuring the community remains invested in their growth.

Gratitude to Our Green Warriors

This initiative would not have been possible without the spirited participation of our community members and volunteers. Their dedication of time and effort was the driving force behind the successful planting of over 250 saplings. We extend our deepest appreciation to every individual who contributed, proving that collective action can create a significant and lasting positive impact on our environment.

4. Environment Awareness Program: Cultivating Eco-Conscious Communities

Launching a Multi-Faceted Awareness Initiative

Building on our commitment to environmental preservation, the organization executed a comprehensive Environment Awareness Program throughout the year. This initiative was designed to address pressing local environmental challenges and empower community members with the knowledge and motivation to adopt more sustainable lifestyles. The program's strategy was to move beyond simple information dissemination and foster genuine, lasting behavioral change through continuous and varied engagement.

Addressing Critical Local Issues

The program focused on three critical and interconnected environmental issues that directly impact our community: the pervasive problem of plastic pollution, the urgent need for water conservation, and the challenge of effective waste management. These themes were selected based on a needs assessment that identified them as key areas where individual action could lead to significant collective improvement in the local environment and public health.

Campaigning Against Plastic Pollution

A major component of the program was dedicated to combating plastic pollution. Our campaign highlighted the detrimental effects of single-use plastics on our soil, water bodies, and local wildlife. Through visually impactful poster displays in public spaces, we illustrated the long lifecycle of plastic waste and promoted practical alternatives like cloth bags and reusable containers. This visual campaign served as a constant and powerful reminder to reduce plastic consumption.

Environment Awareness Program: Cultivating Eco-Conscious Communities

The Power of Performance: Street Plays

To make the message more engaging and accessible, our team of volunteers developed and performed a series of street plays (nukkad natak). These plays, staged in busy market areas and community squares, used storytelling and humor to depict the consequences of environmental neglect. One popular play told the story of a village struggling with a choked river, effectively communicating the harm caused by plastic and other waste, and inspiring dialogue among onlookers.

Promoting Prudent Water Conservation

Given the regional challenges of water scarcity, a significant focus was placed on water conservation. We conducted workshops and small group sessions that educated households on simple yet effective water-saving techniques. Topics included repairing leaky taps, the benefits of rainwater harvesting, and mindful water usage in daily chores. The campaign aimed to instill a deep appreciation for water as a precious and finite resource.

Fostering Responsible Waste Management

The program also tackled the issue of household waste management. Through interactive small group sessions, our facilitators introduced the concept and practice of waste segregation at the source—separating wet, dry, and hazardous waste. We provided demonstrations on home composting, turning kitchen scraps into valuable manure, thereby reducing the burden on local landfills and promoting a circular economy.

Environment Awareness Program: Cultivating Eco-Conscious Communities

Reaching a Wide and Diverse Audience

Our multi-pronged approach ensured that the program's message reached a broad cross-section of the community. From students in schools to shopkeepers in the market and families in their homes, the various activities were tailored to different audiences. In total, the program directly engaged with more than 300 individuals, creating a ripple effect as participants shared their new knowledge with friends and neighbors.

Interactive Learning and Dialogue

The small group sessions proved to be one of the most effective components of the program. Unlike one-way communication, these sessions provided a platform for open dialogue. Community members could ask questions, share their own challenges and solutions, and learn from one another's experiences. This interactive format was crucial for building confidence and ensuring that the eco-conscious habits would be adopted in a practical and sustainable way.

Observing the Seeds of Change

The success of the program is not just measured in the number of people reached, but in the observable changes in community habits. Following the campaigns, our teams noted a visible increase in the use of cloth bags and a greater interest in waste segregation. The program successfully moved the needle from passive awareness to active participation in environmental stewardship.

HIV/AIDS Awareness Program: Promoting Health and Dignity

A Vital Initiative for Community Health

In our ongoing efforts to address critical public health issues, the organization conducted a comprehensive HIV/AIDS Awareness Program on [Insert Date]. This crucial initiative was designed to tackle the spread of HIV/AIDS through education, open dialogue, and the promotion of responsible health practices. The program aimed to create a more informed, compassionate, and supportive community environment for all, particularly for those affected by the virus.

Addressing Misinformation and Fear

The primary motivation for this program was to combat the persistent misinformation and fear surrounding HIV/AIDS. These factors not only contribute to the spread of the virus but also create a climate of silence and discrimination. Our goal was to replace fiction with facts, empowering individuals with accurate knowledge to protect themselves and treat others with dignity and understanding.

Leveraging Expert Knowledge

The program was structured around three core objectives. Firstly, to educate the community on the modes of transmission and proven methods of prevention. Secondly, to underscore the critical importance of voluntary and confidential testing for early detection and treatment. Finally, and most importantly, to actively work towards reducing the social stigma and discrimination faced by people living with HIV/AIDS.

HIV/AIDS Awareness Program: Promoting Health and Dignity

Creating a Safe and Inclusive Forum

The awareness session was organized in our community hall, creating a safe, confidential, and non-judgmental space for learning and discussion. We made a concerted effort to ensure the event was inclusive, encouraging participation from a diverse cross-section of the community, including men, women, and young adults, to ensure the message reached every household.

Distribution of Educational Materials

To reinforce the messages shared by the speakers, a wide range of IEC (Information, Education, and Communication) materials were distributed to all attendees. These included clearly written pamphlets and booklets in the local language, covering topics such as prevention methods, the testing process, and the rights of people living with HIV. These materials serve as a lasting resource that individuals can refer to and share with their families.

A Special Focus on Youth and Adolescents

Recognizing that young people are a particularly vulnerable demographic, the program placed a special emphasis on engaging adolescents and young adults. The content and communication style were tailored to be accessible and relevant to them, addressing their specific concerns and questions in an open and honest manner. Empowering youth with knowledge is a key strategy for preventing the spread of HIV in the next generation.

HIV/AIDS Awareness Program: Promoting Health and Dignity

A Special Focus on Youth and Adolescents

Recognizing that young people are a particularly vulnerable demographic, the program placed a special emphasis on engaging adolescents and young adults. The content and communication style were tailored to be accessible and relevant to them, addressing their specific concerns and questions in an open and honest manner. Empowering youth with knowledge is a key strategy for preventing the spread of HIV in the next generation.

Challenging Stigma Through Empathy

A significant portion of the program was dedicated to challenging deep-seated stigma. The speakers shared stories and case studies that humanized the issue, fostering empathy and encouraging the audience to move beyond prejudice. The session emphasized that HIV is a medical condition, not a moral failing, and that compassion and support are essential for those affected.

Encouraging Open Dialogue

The program concluded with an interactive question-and-answer session that allowed for robust and open dialogue. This segment was invaluable, as it enabled participants to clarify their doubts and address personal concerns in a supportive environment. The willingness of the community to engage in this conversation was a positive indicator of the program's success in breaking the silence around HIV/AIDS.

SUSTAINABLE DEVELOPMENT GOALS



S D Gs

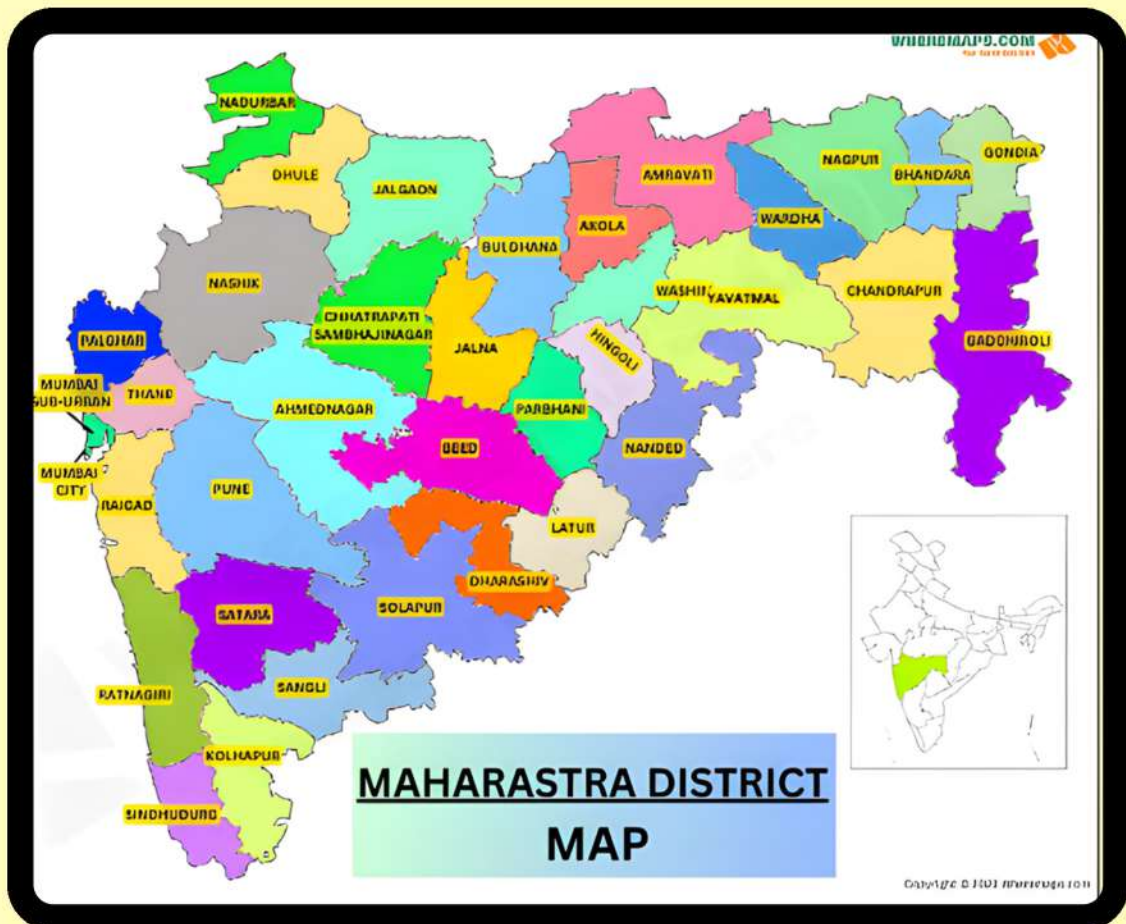


COMMUNITY OUTREACH

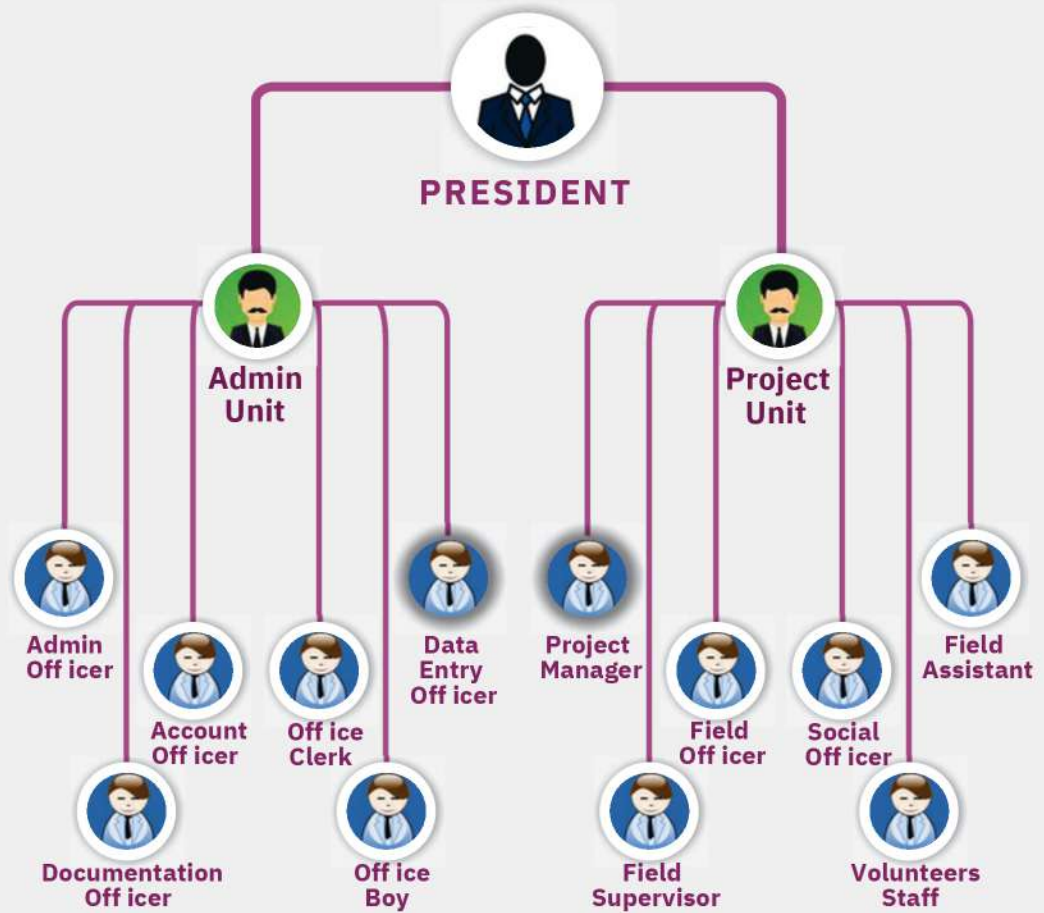


COMMUNITY OUTREACH

Maharashtra



ORGANOGRAM



ORGANOGRAM

JOINT SUCCESS THEORY COUPLE GOWORK MUTUAL
ADVANTAGE COMMUNITY SYNCED CLIQUE COLLEGES FRIENDSHIP MIGRATION BUSINESS
ALLTOGETHER DEVELOPMENT CONVENTION ONLINE PARTNERSHIP GROUP COLLECTIVE STRATEGY
POWER FAMILY **TEAMWORK** INTERWORKING FRIEND TEAM COMBINED
TRIBAL COMMON TOGETHER SOCIAL-MEDIA COLLABORATION PARTNERSHIP COOPERATION
ASSIST SKILLS SOCIAL TACTICS EMPLOYEE PARTNER GANG
CLASS PEOPLE HELP IMPORTANT CLUSTER CONJOINT



**KAWISH E JAMEEL
FOUNDATION**



**Thank You
For Your Attention!**

*Thank
You!*

Contact us

Office:

**STAR COMPUTERS, MOHAMMADI CHOWK, SILK MILLS
COLONY, AURANGABAD - 431005**



| 9028282166 |



| kawishejameelfoundation@gmail.com |